

EUROPEAN PESTICIDE REGISTRATION

Waterborne has extensive experience with FOCUS modeling, GIS landscape analysis, and higher-tier exposure analysis in support of registration submissions for Directive 91/414/EEC. Whether you need to interpret lysimeter study results in the context of the EU landscape, assess drift from fields into nearby streams, or develop Member State scenarios, Waterborne has the expertise you need.

Our staff have pioneered the use of GIS and remote sensing for landscape-based exposure assessments which have been successful in both Annex I and Annex III inclusions. Our dedicated engineers and scientists offer you the following services:

LANDSCAPE ANALYSIS

- Landscape-Based Distributions of Exposure
- GIS-Based Runoff and Leaching Assessments
- Spatially Explicit Drift Assessments
- Identification of Terrestrial Non-Target Habitats
- Remote Sensing / Image Classification
- Placing Monitoring Data into EU-Wide Context

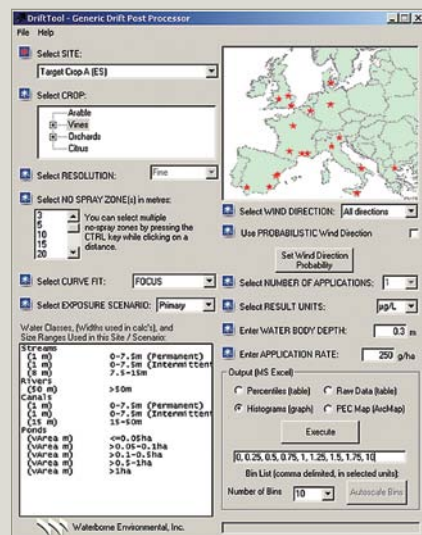
DATA SERVICES

- Member State Spatial Data Research and Acquisition
- Custom Acquisition of Soils, Weather, and Hydrologic Data
- Detailed Crop Statistics Acquisition to NUTS 5 Level

MODELING

- Standard FOCUS Assessments
 - Kinetics Modeling
 - Steps 1-2 Surface Water
 - Step 3 Surface Water with SWASH
 - Groundwater with PRZM, PEARL, PELMO, MACRO
 - Step 4 Higher-Tier Assessments
 - SWAN
 - Mitigation and Best Management Practices
 - Probabilistic Risk Assessment
- Member State
 - Modeling (e.g., GeoPEARL, EXPOSIT, HardsPEC)
 - Scenario Development
- Rice Paddy Studies (MED-RICE and RICEWQ)

Waterborne has contributed to the advancement of the European risk assessment process. We have developed the PRZM components of the FOCUS groundwater and surface water models and lead a sub-group of the FOCUS Working Group on Landscape and Mitigation Factors in Ecological Risk Assessment. We promoted the understanding of probabilistic approaches by participating in EUPRA and EUFRAM, and by presenting scientific material at numerous European conferences and regulatory authorities over the last 10 years.





Innovative Approaches to Environmental Studies and Risk Assessment

Waterborne offers a diverse portfolio of environmental services:

ENVIRONMENTAL MODELING

- Chemical Fate and Transport
- Watershed Characterization
- Site-Specific Modeling and Calibration
- Anti-foulants
- Software Development
- Monte Carlo and Traditional Statistical Analysis

RISK ASSESSMENT

- Ecological and Human Health Analysis
- Risk Mitigation
- Vulnerability Analysis
- Risk Mapping

FIELD STUDIES

- Watershed and Ecological Monitoring
- Terrestrial and Aquatic Field Dissipation Studies
- Bioaccumulation Studies
- Crop Residue Studies

GEOSPATIAL INFORMATION MANAGEMENT

- GIS Analysis
- Geostatistical Analysis
- Custom GIS Application Development
- Web Application Development
- GIS Portal Toolkit Implementation
- Web Applications Hosting / Data Hosting



Waterborne is an
Authorized ESRI®
Business Partner



INNOVATIVE | EXPERIENCED | RESPECTED

Contact Waterborne to find out how we can help you.