

GEOSPATIAL INFORMATION MANAGEMENT

How does the interaction between agricultural land and the environment change over time within a watershed? How much spray drift comes off a particular orchard? What are the pesticide loadings for an entire watershed? Waterborne uses Geographic Information Systems (GIS), remote sensing, and spatial statistics to answer these and other questions. We integrate geospatial data with cross-discipline analyses to provide customized solutions. Our dedicated engineers and scientists offer you the following services:

GIS ANALYSIS

- Geospatial Modeling
- Custom GIS Programming
- Advanced Spatial Analysis
- Watershed Characterization
- Geospatial Simulation of Chemical Transport
- Economic Impact Analysis
- Geostatistical Analysis

REMOTE SENSING

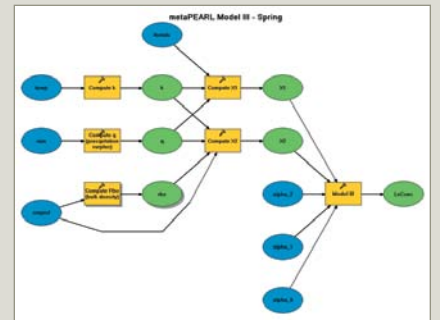
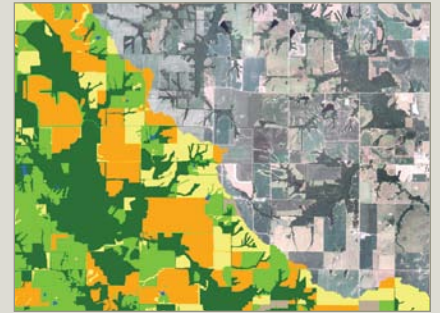
- Land Cover Classification
- Multispectral Image Analysis
- Change Detection/Temporal Analysis
- Field Data Collection
- Ground Truthing
- Hyperspectral Image Analysis

SPATIAL DATA

- Acquisition
- Creation and Management
- Standardization
- Mining

WEB-BASED GIS

- Custom Web-Based Map Services
- GIS Portal Toolkit Implementation and Hosting
- Data and Web Application Hosting
- Spatial Data Infrastructure



Waterborne is an Authorized ESRI® Business Partner



Innovative Approaches to Environmental Studies and Risk Assessment

Waterborne offers a diverse portfolio of environmental services:

ENVIRONMENTAL MODELING

- Chemical Fate and Transport
- Watershed Characterization
- Site-Specific Modeling and Calibration
- Mitigation Assessment
- Model Development and Customization
- Monte Carlo and Traditional Statistical Analysis

RISK ASSESSMENT

- Ecological and Human Health Analysis
- Risk Mitigation
- Endangered Species Assessment
- Spatial and Temporal Exposure Characterization
- Vulnerability Analysis
- Probabilistic Assessment
- Risk Mapping

FIELD STUDIES

- Watershed and Ecological Monitoring
- Terrestrial and Aquatic Field Dissipation Studies
- National and Regional Drinking-Water Monitoring
- Runoff and Surface-Water Monitoring
- Prospective and Retrospective Ground-Water Monitoring
- Simulated Rainfall Studies
- Bioaccumulation Studies
- Crop Residue Studies



INNOVATIVE | EXPERIENCED | RESPECTED

Contact Waterborne to find out how we can help you.